



## Role Description for Chair

If you have difficulty with reading this policy, including any difficulties with sight or hearing, or if you require this document translated into another language, please contact us and we will be happy to provide this information in a format that suits your needs.

# Our Vision, Our Values, Our Strategic Objectives

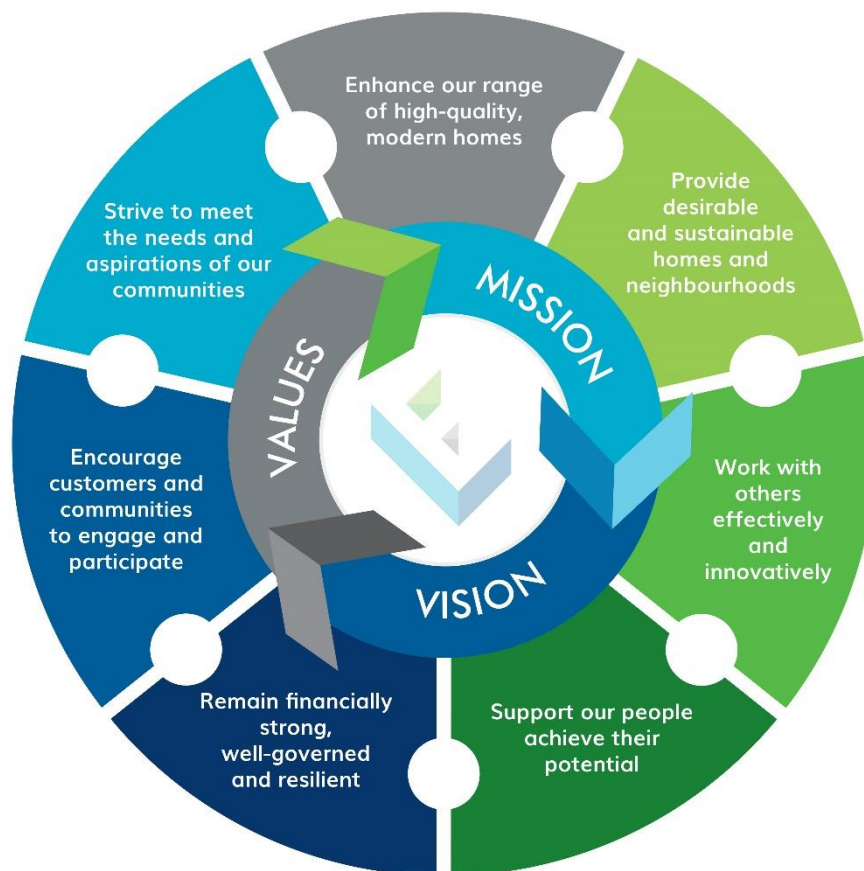
## Our Vision

A vibrant neighbourhood where everyone can prosper.

## Our Values

Caring, Reliable, Fair, Open and Adaptable

## Our Strategic Objectives



## Equality and Diversity Statement

Elderpark Housing are committed to ensuring people or communities do not face discrimination or social exclusion due to any of the following protected characteristics: age; disability; gender reassignment; marriage and civil partnership; pregnancy and maternity; race; religion and belief; sex or sexual orientation.

This document complies with our Equality and Diversity Policy.

We will regularly review this Policy and consider any equalities implications taking the necessary action to address any inequalities (either directly or indirectly) that result from the implementation of this Policy.

# Contents

<b>Introduction</b>	<b>Page 4</b>
<b>Key Responsibilities</b>	<b>Page 4 - 5</b>
<b>Leadership and Direction</b>	<b>Page 5</b>
<b>Working with the Chief Executive Officer</b>	<b>Page 5 – 6</b>
<b>Promoting Good Governance</b>	<b>Page 6</b>
<b>Conduct of Elderpark Housing Business</b>	<b>Page 7</b>
<b>Monitoring and Review</b>	<b>Page 7</b>

## **1. Introduction**

- 1.1 This role description sets out the particular duties and responsibilities that attach to the Chair of Elderpark Housing [and to the Convenors of Elderpark Housing's Sub-committees]. The responsibilities described here are additional to those set out in the governing body members' (GBM) role description. It should be considered alongside Elderpark Housing's Rules, Standing Orders, Code of Conduct and Entitlements, Payments and Benefits Policy .
- 1.2 This role description will be used to support the annual review of the governing body's effectiveness. It will be used to appoint the Chair [and Sub-committee Convenors] after each AGM. GBMs who wish to be considered for this office will be invited to say how, if elected, they will carry out the duties that are set out here before the election takes place.
- 1.3 In the event that the Chair is unable to fulfil their responsibilities, the Vice Chair will carry out the duties of the Chair.
- 1.4 As set out in the Standing Orders, the Chair of Elderpark Housing may not also serve as the Convenor of a sub-committee and each sub-committee must elect a different Convenor.
- 1.5 An overview of the Role of the Chair is outlined in Rule 59.5 of Elderpark Housing's Rules.
- 1.6 The Chair will be elected by the governing body each year at the first governing body meeting following the AGM. Whilst the Chair of Elderpark Housing can be re-elected, in accordance with Rule 59.10 of Elderpark Housing's Rules, they cannot serve a continuous term of more than five years. There is no expectation that the Chair must serve the full five year maximum term.

## **2. Key Responsibilities**

- 2.1 The Chair must act, and be seen to act, at all times on behalf of the governing body. The Chair's key responsibilities are:
  - To lead the governing body [or sub-committee] constructively, provide direction and manage meetings effectively
  - To develop and maintain a constructive and positive working relationship between the Chair and Chief Executive Officer and senior staff
  - To uphold Elderpark Housing's Code of Conduct and promote good governance
  - Ensure decision making complies with Standing Orders and Scheme of Delegation
  - To be a positive and effective ambassador for Elderpark Housing

- To ensure that Elderpark Housing’s business is conducted effectively between meetings and that emergency decisions are taken appropriately when required
- To be accountable for the actions of the Chair

### **3. Leadership and Direction**

#### **3.1 The Chair is expected to:**

- Lead by positive action and example
- Represent Elderpark Housing positively and effectively
- Set the style and tone of governing body [or Sub-committee] meetings to ensure effective and participative decision making
- Promote and uphold the Code of Conduct for Elderpark Housing’s governing body
- Ensure that the necessary arrangements are in place to enable Elderpark Housing to honour its obligations, achieve its objectives and meet agreed targets
- Demonstrate and support the principles of good governance at all times
- Ensure that the governing body has access to the range of skills, knowledge and experience necessary for the achievement of Elderpark Housing’s aims and objectives and for the fulfilment of the governing body’s responsibilities
- Ensure that the governing body has access to the necessary advice, information and support to fulfil its responsibilities and that, where appropriate, external and/or specialist advice is sought
- Provide support to new and experienced governing body members by promoting access to relevant induction, training and development opportunities

### **4. Working with the Chief Executive Officer**

#### **4.1 The Chair should:**

- Establish a constructive relationship with the Chief Executive Officer and ensure that their respective roles of leading and managing are recognised and promoted effectively. Sub-committee Convenors should establish similar relationships with the relevant senior staff member.
- Ensure that the conduct of Elderpark Housing’s business continues effectively between meetings of the governing body and act under delegated or emergency authority when necessary

- In the event of a vacancy, ensure that effective arrangements are implemented for the recruitment and appointment of a Chief Executive Officer, in accordance with Elderpark Housing's agreed recruitment practices
- Carry out, with at least one other governing body member, the Chief Executive Officer's annual appraisal (including setting objectives, overseeing performance and requiring professional development) and report to the governing body.
- Ensure that appropriate arrangements are in place and implemented effectively for the support and remuneration of the Chief Executive Officer
- In the event that it is necessary, be responsible for dealing with a grievance or disciplinary action in respect of the Chief Executive Officer, in accordance with Elderpark Housing's agreed procedures

## **5. Promoting Good Governance**

### **5.1 The Chair is required to:**

- Promote and demonstrate the highest standards of ethical conduct and integrity
- Build and sustain constructive relationships with other office bearers, members of the governing body and senior staff
- Initiate any investigation under the terms of Elderpark Housing's Code of Conduct
- Chair all general meetings of Elderpark Housing in accordance with the Rules
- Chair all governing body meetings of Elderpark Housing, in accordance with the Rules and Standing Orders
- Ensure that all governing body members have access to appropriate information and have an opportunity to contribute to discussion and consideration of all matters requiring their attention
- Ensure that effective induction and ongoing training and support are provided to all governing body members and that annual performance reviews are conducted in accordance with Elderpark Housing's policy
- Manage meetings inclusively and effectively to ensure that there is sufficient time for the consideration of all relevant issues; for performance to be monitored effectively and for risk to be assessed realistically
- Ensure that all delegated authorities are monitored and reporting arrangements are implemented effectively

## **6. Conduct of Elderpark Housing's Business**

6.1 The Chair is expected to:

- Ensure that Elderpark Housing's business is efficiently and accountably conducted between governing body meetings
- Sign (or otherwise authorise) payment instructions and documents requiring the governing body or the Chair's authorisation, in accordance with Elderpark Housing's standing orders
- Take decisions on behalf of the organisation in the event of emergencies that occur outside the regular meeting cycle and report these back to the governing body for ratification
- Ensure that the range of skills, knowledge and experience required to lead Elderpark Housing effectively is available to the governing body and that the governing body is able to access specialist support when necessary
- Lead the governing body's succession planning and recruitment to ensure good governance and regulatory compliance.

## **7. Monitoring and Review**

7.1 This role description was approved by the governing body in February 2023. It will be reviewed not later than February 2026.